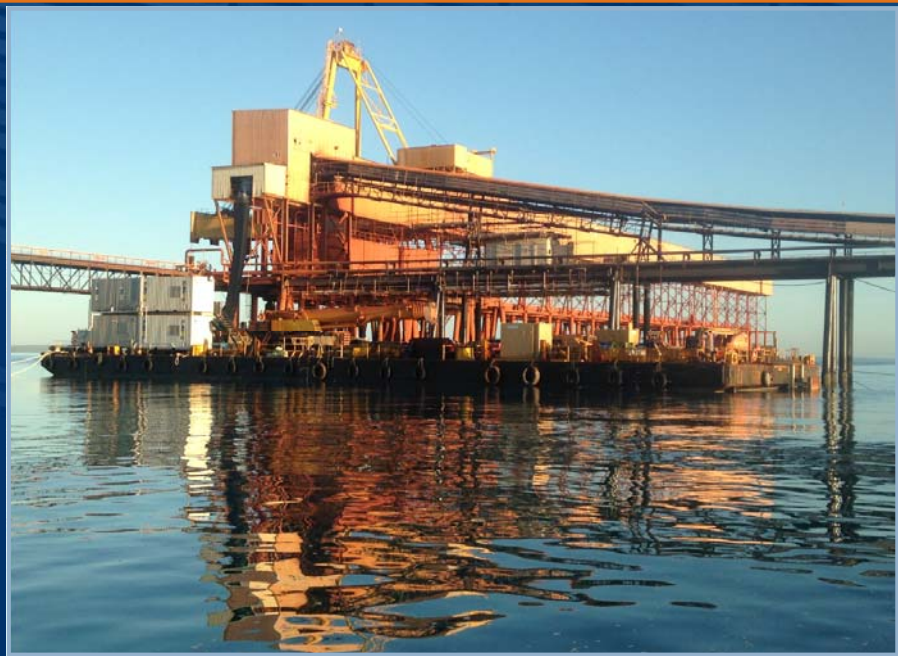


# Arnhem Constructor

## Deck Cargo & Ballast Tank Barge



**BHAGWAN**  
marine

### BUILT

BUILT IN BATAM, INDONESIA IN 2010, ABS CLASSIFICATION, SUB-DIVIDED WITH 2 LONGITUDINAL & 7 TRANSVERSE BULKHEADS WITH 24 WATERTIGHT COMPARTMENTS.

SPUD WELLS TAKING 3X 900MM X 24M LONG SPUDS

4X 18T DECK WINCHES WITH ALL RIGGING & GROUND TACKLE COMPONENTS,

INCLUDING 4X 3T DELTA FLIPPER ANCHORS

2X 230HP HYDRAULIC POWER PACKS

2X SKEGS AT THE STERN

DESIGNED AS A BALLASTABLE BARGE WITH A 15T DECK LOAD PER METRES SQUARE (M<sup>2</sup>)

RUBBER TYRE FENDERS FITTED

STANCHIONS & HAND RAILS

BOW DOOR RAMP AVAILABLE

OFFICE, CRIB ROOM, M/F TOILETS, FIRST AID ROOM & STORE ROOM

ICE MACHINE: MANITOWOC ID 0606 A – 251X. 200 L/DAY

R.O. PLANT – FRESH WATER MAKER. 5500L WATER TANK.

4100L FUEL CELL (CRANEABLE) WITH AIR DRIVEN PUMP.

SEWERAGE TREATMENT PLANT.

80KVA GENSET

### CLASSIFICATION

CLASSIFICATION SOCIETY: ABS A1 BARGE

FLAG: AUSTRALIAN

### DIMENSIONS

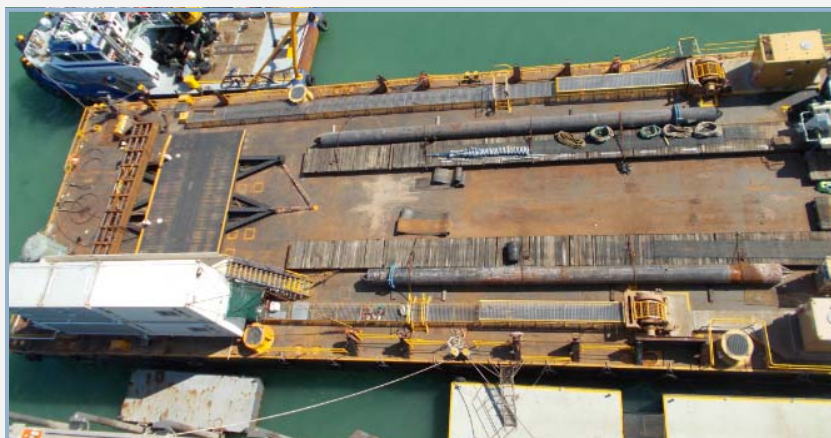
LENGTH OVERALL: 64.008M

BEAM: 18.288M

DEPTH: 3.66M

GRT: 1090T

NET: 327T



### Perth Head Office

Level 3 251 St Georges  
Terrace, Perth, WA, 6000.  
Tel: +61 8 94242300

### Dampier Office

1 Nielsen Place,  
Dampier,  
WA, 6713.  
Tel: +61 8 9144 3300

### Brisbane Office

30 Paringa Road,  
Murarie,  
QLD, 4172  
Tel: +61 7 3907 3111

### Darwin Office

869 Berrimah Road  
East Arm,  
NT, 0822  
Tel: +61 8 8982 0600

### Technical Warehouse Facility

9 Longfellow Court,  
Belmont,  
WA, 6104.  
Tel: +61 8 9424 2300

[www.bhagwanmarine.com](http://www.bhagwanmarine.com)

THE DATA ON THIS SPECIFICATION IS PUBLISHED IN GOOD FAITH AND FOR GENERAL INFORMATION PURPOSE ONLY.  
IT DOES NOT WARRANT ITS ACCURACY OR COMPLETENESS AND TO THE FULL EXTENT ALLOWED BY LAW EXCLUDES LIABILITY.  
CHARTER ENQUIRIES CAN BE DIRECTED TO OUR COMMERCIAL DEPARTMENT  
PHONE: +61 8 9965 9700 FAX: +61 8 9965 4545 EMAIL: [COMMERCIAL@BHAGWANMARINE.COM](mailto:COMMERCIAL@BHAGWANMARINE.COM)