

# Henderson

250ft Deck Cargo Ballast  
Tank Barge



## VESSEL PARTICULARS

<b>BUILT</b>	2011
<b>CLASSIFICATION</b>	BV
<b>OFFICIAL NO. UNIQUE IDENTIFIER</b>	396787
<b>REGISTRY</b>	Dampier

## DIMENSIONS

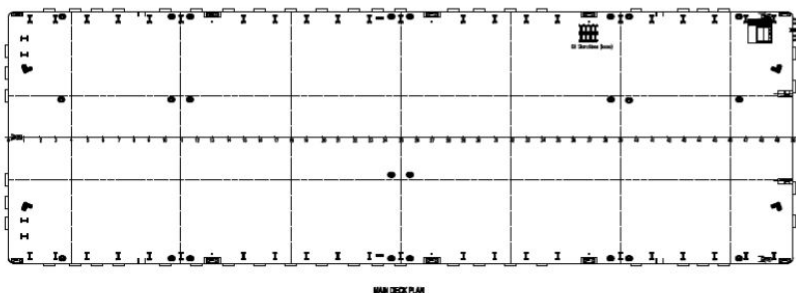
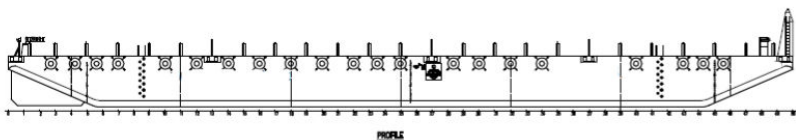
<b>LENGTH</b>	76.20m
<b>BREDTH</b>	24.40m
<b>DEPTH MOULDED</b>	4.88m
<b>DRAFT (MAX)</b>	3.9m
<b>CARGO DEADWEIGHT</b>	Approx. 5,500t

## CAPACITIES

<b>DECK LOAD</b>	12t/m <sup>2</sup>
<b>DECK PLATE</b>	16mm
<b>HULL &amp; BOTTOM</b>	12mm

## DECK FITTINGS

1 Set Navigation Light Stands  
Stockless Bower Anchor  
Side Ladder Pockets



### PRINCIPAL PARTICULARS

LENGTH O.A.: 250'(76.2 m)  
BREADTH MLD: 80'(24.384 m)  
DEPTH MLD: 16'(4.88 m)  
DRAFT MLD: 3.88 m  
FRAME SPACE: 1524 mm

Tanks (except for fore & aft peak) are designed  
for water ballasting.

PERMISSIBLE DECK LOADING 20.0T/SQ.M. UDL



### CHARTER ENQUIRIES

T: +61 8 9424 2300

E: [commercial@bhagwanmarine.com](mailto:commercial@bhagwanmarine.com)

For regional contact details, refer to [bhagwanmarine.com](http://bhagwanmarine.com)

The data on this specification is published in good faith and for general information purpose only  
It does not warrant its accuracy or completeness and to the full extent allowed by law excludes liability

UNCONTROLLED WHEN PRINTED