

TSA 2301

230ft Deck Cargo Barge

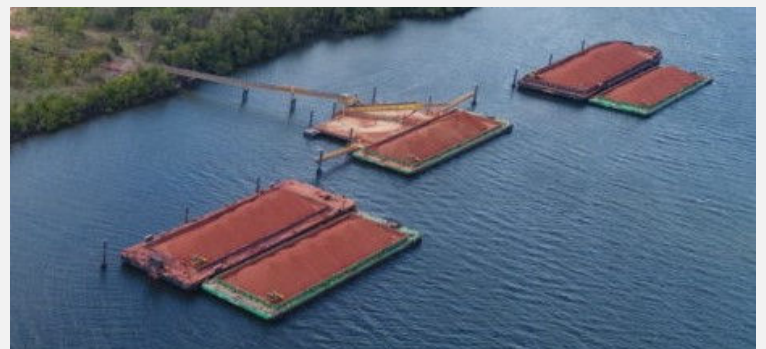


BUILT: 2011
HULL: Steel 13mm
CLASSIFICATION: Unmanned Barge
FLAG: Australian
PORT OF REGISTRY: Fremantle
MMSI: 503000202

DIMENSIONS

LENGTH OVERALL: 70.15m
BEAM: 19.51m
DEPTH MOULDED: 4.27m
DESIGN DRAFT: 3.3m
GRT: 1343GT | 430 NT
CARGO DEAD WEIGHT: Approx. 3,265t
DECK STRENGTH: 16mm Steel Deck Plate
SUMMER FREEBOARD: 902mm

DECK FITTINGS 2x 193t SMIT Type Towing Brackets at Bow & Stern
 Emergency Anchor Mooring System
 8 nos. 12t mooring
 24t Towing Double Bits Type Bollard 10"
 1020kg Halls (Stockless) Anchor
 4ft sideboards



Head Office
 L3 / 251 St Georges Tce
 Perth WA 6000
 Tel: +61 8 9424 2300

Dampier Office
 1 Nielsen Place
 Dampier WA 6713
 Tel: +61 8 9144 3300

Darwin Office
 12/30 Frances Bay Drive
 Stuart Park NT 0800
 Tel: +61 8 8982 0600

Brisbane Office
 30 Paringa Road
 Murarrie QLD 4172
 Tel: +61 7 3907 3111

Melbourne Office
 97 Kooringa Way
 Port Melbourne VIC 3207
 Tel: +61 3 7019 330

www.bhagwanmarine.com

The Data On This Specification Is Published In Good Faith And For General Information Purpose Only
 It Does Not Warrant Its Accuracy Or Completeness And To The Full Extent Allowed By Law Excludes Liability.
 Charter Enquiries Can Be Directed To Our Commercial Department
 Phone: +61 8 9424 2300 Email: commercial@bhagwanmarine.com