

# BHAGWAN DRYDEN

57m ROV & Air Dive Support Vessel



## KEY FEATURES

- **Fuel Efficient** (Approx 65% fuel saving over traditional DSV)  
- Detailed fuel figures available on request
- **Shallow Draft**
- **Accepted Safety Case** (NOPSEMA & DMIRS)
- **Emergency Hybrid Capability**
- **Twin Hull Providing Stable Platform**
- **4 Point Mooring System**
- **Caters for up to 40 Personnel**
- **Dedicated ROV Control Room**
- **Dedicated Dive Control Room**
- **Integrated Dive Systems**
- **Integrated Survey and Positioning System**
- **2 Built-in Decompression Chambers**
- **Fire Fighting Capabilities** (FIFI 1)
- **Deck Crane 6-16 Tonnes**
- **45 Tonne A-Frame** (Removable)

## GENERAL INFORMATION

BUILT:	Singapore 2014
OWNER:	Bhagwan Marine
CLASSIFICATION:	ABS - ✕A1, DSV AIR, FFV 1, Offshore Support Vessel, SPS, ©, ✕AMS, ✕ACCU, ✕DPS-2, ENVIRO, GP, RRDA, UWILD, CRC, RW Certified to IMDG Code
CLASS TYPE:	ABS Class Air DSV (Catamaran) Diesel Electric
IMO NUMBER:	9680968
CALL SIGN:	VHCO

## DIMENSIONS

LENGTH OVERALL:	57M
BEAM:	16.00M
DRAFT:	3.25M (Max)
GROSS TONNAGE:	1475GT
DEADWEIGHT:	250 MT

## PERFORMANCE

MAX. OPERATING SPEED: 10 Knots (Approx.)

## CAPACITIES

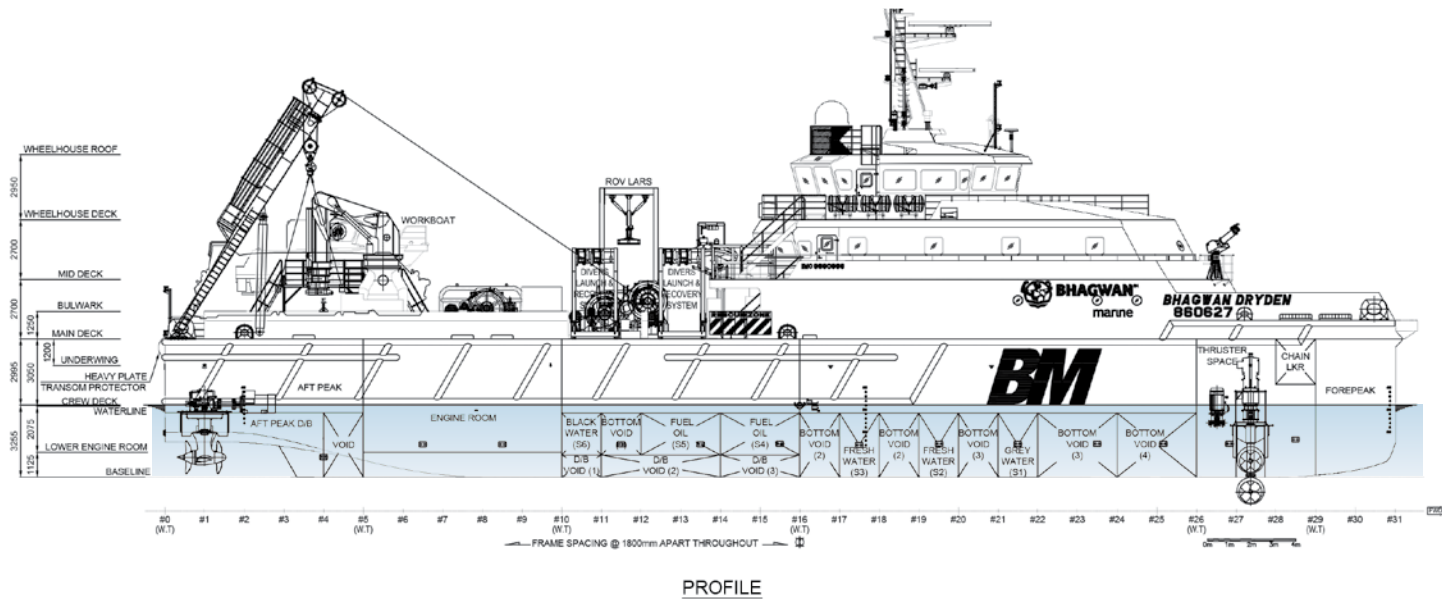
CARGO:	Up to 150 Tonnes
FUEL OIL:	130 M³ (Approx.)
POTABLE WATER:	70m³ plus water making facilities
DECK RATING:	10.0 Tonne M²

## CARGO DECK

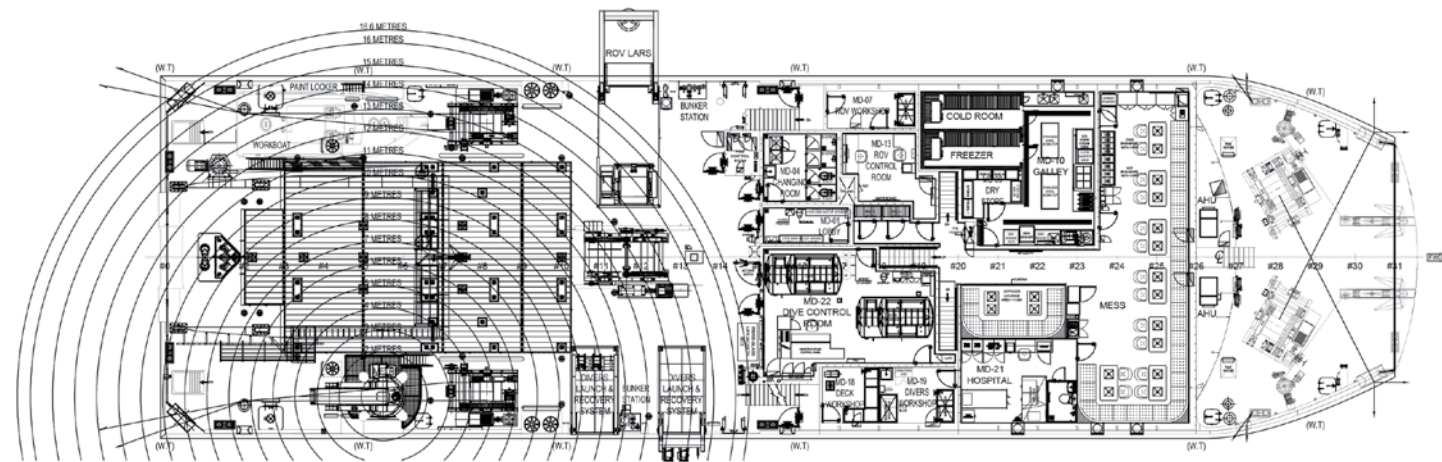
CLEAR DECK AREA:	260 M² (Approx.)
DECK LOAD:	10.0 T/M²

# BHAGWAN DRYDEN

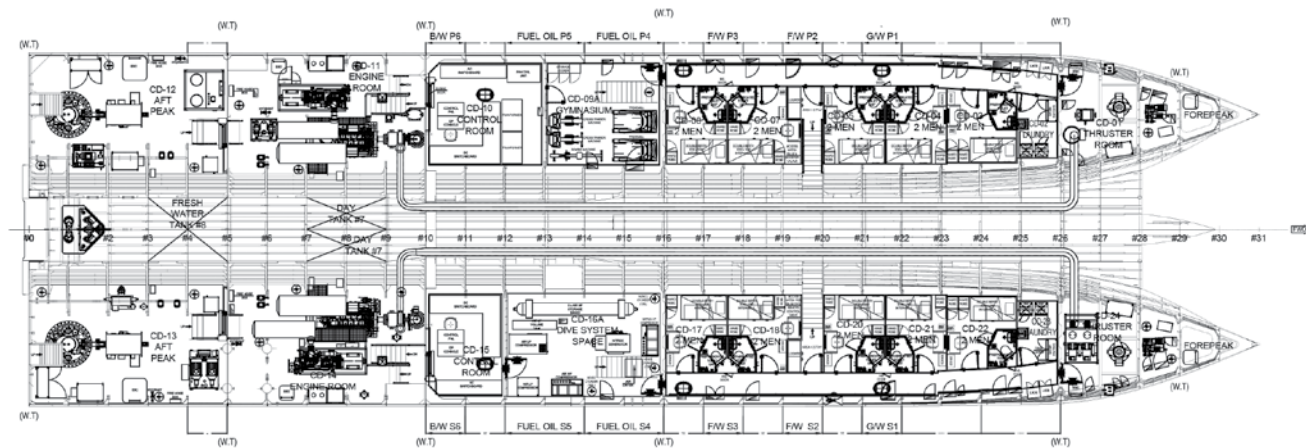
## 57m ROV & Air Dive Support Vessel



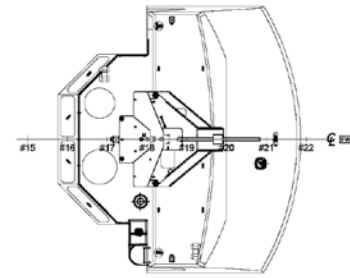
## PROFILE



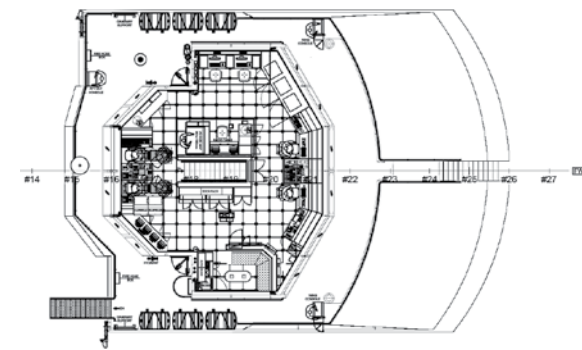
MAIN DECK  
(6,250 A.B.L)



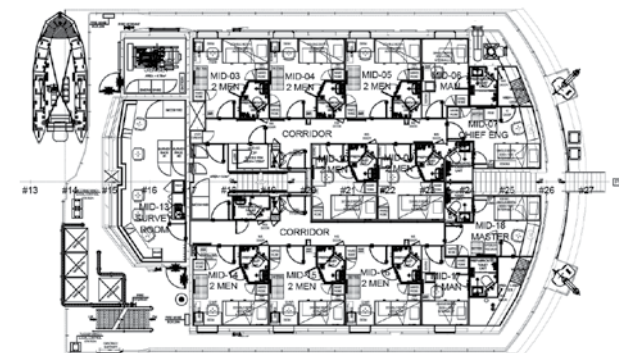
CREW DECK (3,200 A.B.L.)  
(20x2 MEN = 20 MEN)



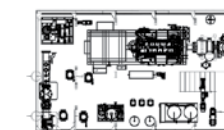
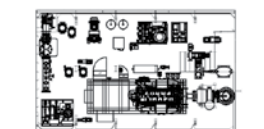
WHEELHOUSE TOP  
(14,600 A.B.L)



WHEELHOUSE DECK  
(11,650 A.B.L)



MID DECK  
(8,950 A.B.L)



LOWER ENGINE ROOM  
(1,125 A.B.L)

## TECHNICAL SPECIFICATIONS

## HULL

Twin Keel Catamaran Steel Hull  
16.0M Open Transom Inside Safety Rails  
Rescue Zones Port & Starboard

## MAIN MACHINERY

- 2 x Schottel STP 550 Stern Azimuth Thrusters
- 2 x Bow Thrusters, TM300RT Thrustmasters (Tunnel/Azimuth)
- 2 x 950 kW Cummins QSK38-DM
- 2 x 400 kW Cummins QSK19-DM
- 2 x 65kwhr, 48VDC Battery Systems connected to Main DC Bus System giving vessel unique ability to operate on battery power for 20 minutes at 4 knots
- 1 x Aspin Kemp & Associate Power Management System

## DECK EQUIPMENT

**DECK CRANE:** HS Marine Crane Model AKC 245HE4  
16 Tonne SWL @ 7.5m  
6 Tonne SWL @ 16m

**ANCHORS:** 4 x 2,000kgs Delta Flipper

**AVAILABLE POWER:** 2 x 250A maximum 3-phase / Neutral  
hard wired connections

**AFT DECK:** 10 x 32A 3-phase (no Neutral) 415v sockets  
6 x 15A 240v single phase sockets

**STERN ROLLER:** 50 Tonne

**SHARK JAWS AND ANCHOR HANDLING PINS:** 100 Tonne

## OPTIONAL DECK EQUIPMENT

**WORK WINCH: (ELECTRICAL)**

Double Drum Waterfall  
Upper Drum 20 Tonne (100M x 30MM)  
10 Tonne High Speed  
Lower Drum 20 Tonne  
(1200M x 32MM Wire)

<b>POINT MOORING: (ELECTRICAL)</b>	EMS 4 Point Mooring System Electric Zone 2 Explosion Proof Drum Pull First Layer 37M/T Top Layer 5.3M/T / 0-73M/Min Drum Brake Holding 100M/T (First Layer)
----------------------------------------	-------------------------------------------------------------------------------------------------------------------------------------------------------------------------

**'A' FRAME:** 45 Tonne (Harbour) with Integral  
8 Tonne Winch (Electric)  
100M x 20M Wire  
22.5 Tonne Man Riding  
Able to Recover Hyperbaric Life Boat  
(HLB / SPHL)

## MISCELLANEOUS EQUIPMENT

**MARPOL COMPLIANT:** Hamann Sewage Treatment Plant

**SULLAGE TANK:** Capacity 30m<sup>3</sup>

### OILY WATER SEPARATOR: BOSS

### GAS DETECTION MONITORING SYSTEM: Detcon

## WHEELHOUSE

<b>GYROCOMPASS:</b>	3 x Raytheon STD22
<b>AIS:</b>	Furuno FA-150
<b>VDR:</b>	Furuno VR-3000
<b>RADAR:</b>	Furuno, FAR-2837S and FAR-2827D
<b>ECHO SOUNDER:</b>	McMurdo S4 & E5
<b>AUTOPILOT:</b>	Raytheon Pilotstar-D
<b>GMDSS:</b>	Furuno GP-150
<b>SART &amp; EPIRB:</b>	McMurdo S4 & E5
<b>NAVTEX RECEIVER:</b>	Furuno NX-700A
<b>GPS:</b>	Furuno GP-150
<b>INMARSAT C EQUIP:</b>	SAILOR 6110 SAT-C
<b>V-SAT:</b>	KNS SuperTrack Z10
<b>CCTV SYSTEM:</b>	18 PTZ Cameras (IMCOS)





# BHAGWAN DRYDEN

57m ROV & Air Dive Support Vessel

## TECHNICAL SPECIFICATIONS

(CONTINUED)

### REMOTELY OPERATED VEHICLE

**FULLY INSTALLED WORK CLASS ROV:** FCV 600  
Depth Rating 600msw  
Tether Management System (TMS)  
Schilling Manipulators  
- Seven Function (Orion)  
- Five Function (Rigmaster)

**ROV CONTROL ROOM:** Built into vessel, maintaining deck capacity

### DIVING SYSTEMS

**DEPTH RATING:** 50m

**DIVE LARS:** 2 X Pommec Launch & Recovery Systems

**CHAMBERS:** 2 X Hytech 72" Twin Lock Deck Decompression Chambers

**CLASSIFICATION:** Air / Nitrox Diving System Built to ABS Classification Rules Enabling A1 Class Notation

### SURVEY & INSPECTION SYSTEMS

**VIDEO:** MOXA - Fibre Optic Video and Data Sharing Network Between Survey, Diving and ROV

**MBES:** R2Sonic / Reson Hull Mounted Flange

**OFFICE:** Dedicated Fully Equipped Office c/w 4x Workstations

### DYNAMIC POSITIONING SYSTEMS

**DP:** Kongsberg K-POS DPS2 (IMO DP Class 2) - Sensors

**POSITIONING:** Veripos LD5-GG2 DGNSS System  
Kongsberg 360° RADIUS Relative Positioning System  
Kongsberg Spot Track Reference System

**USBL:** Sonardyne Ranger 2 Pro USBL (retractable)

**MRU:** Kongsberg, 3 x units

**GILL WIND SENSOR:** 3 x units

**GYROCOMPASS:** 3 x Raytheon STD 22

### ACCOMMODATION

**MID DECK:** Master's Cabin with Ensuite  
Engineer's Cabin with Ensuite  
8 x 2 Berth Cabins with Ensuite  
2 x 1 Berth Cabins with Ensuite  
Large Client Office / Survey Room

**MAIN DECK:** Large Galley  
Dining Area for 30  
Hospital  
2 x Showers, 2 x Toilets & Change Room  
Laundry  
Workshops / Gear Store  
Dive / ROV Control Office

**PORT HULL:** 5 x 2 Berth Cabins with Ensuite  
All Cabins include TV / DVD  
Laundry  
Fully Equipped Gymnasium

**STARBOARD HULL:** 5x 2 Berth Cabins with Ensuite Laundry  
**ALL:** All Cabins incl. Sat TV / DVD & Internet



Head Office:  
Level 3 / 251 St Georges Tce,  
Perth, Western Australia 6000

T: +61 8 9424 2300  
E: [commercial@bhagwanmarine.com](mailto:commercial@bhagwanmarine.com)  
W: [bhagwanmarine.com](http://bhagwanmarine.com)